

Research article

Open Access

## The nature and fate of natural resins in the geosphere XIII: a probable pinaceous resin from the early Cretaceous (Barremian), Isle of Wight

P Sargent Bray and Ken B Anderson\*

Address: Department of Geology, SIU Carbondale, Carbondale IL, 62901, USA

Email: P Sargent Bray - sargentb@siu.edu; Ken B Anderson\* - kanderson@geo.siu.edu

\* Corresponding author

Published: 29 January 2008

Received: 29 June 2007

Geochemical Transactions 2008, 9:3 doi:10.1186/1467-4866-9-3

Accepted: 29 January 2008

This article is available from: <http://www.geochemicaltransactions.com/content/9/1/3>

© 2008 Bray and Anderson; licensee BioMed Central Ltd.

This is an Open Access article distributed under the terms of the Creative Commons Attribution License (<http://creativecommons.org/licenses/by/2.0>), which permits unrestricted use, distribution, and reproduction in any medium, provided the original work is properly cited.

### Abstract

Terpenoid resin is produced by all families and most genera of the order Coniferales (the conifers), and the distribution of terpenes present in most conifer resins is characteristic of the originating family. Analyses of early Cretaceous (Barremian) amber (fossil resin) from the English Wealden, Isle of Wight, southern England, by pyrolysis-gas chromatography-mass spectrometry (Py-GC-MS), indicate a terpene distribution dominated by abietane- and labdane-type terpenes. Similar distributions are observed in some species of the extant family Pinaceae. The Pinaceae are well represented within the Wealden deposits of southern England, by only one (known) species, *Pityites solmsii* (Seward) Seward, whereas the macro-fossil record of these deposits is dominated by the extinct conifer family *Cheirolepidiaceae*, for which no resin chemistry has been reported. By analogy with modern materials, it is probable that the ambers found in these deposits are derived from an extinct member of the Pinaceae, but given the absence of evidence concerning the chemotaxonomy of the *Cheirolepidiaceae*, this family cannot be excluded *a priori* as a possible paleobotanical source. These ambers may therefore be assigned to either the Pinaceae or to the *Cheirolepidiaceae*. These samples are the oldest ambers to date to yield useful chemotaxonomic data.

### Background

The Isle of Wight, off the south coast of England, is well known for rich lower Cretaceous (Barremian) fossil beds. In addition to numerous fossil fauna, (the Isle of Wight is widely recognized as one of the most important dinosaur fossil sites in the world), extensive floral remains have also been reported. The paleoenvironment of these deposits has been characterized by Insole and Hutt [1] as semi-arid, with distinct wet and dry seasons. Based upon macrofossil evidence, Oldham [2] concluded that the paleoflora contributing to these strata was dominated by genera of the extinct conifer family *Cheirolepidiaceae*. Alvin et al. [3] further refined this assignment and have reported that

the dominant conifer in this environment was *Pseudofrenolopsis parceramosa*, creating stands wherein *Brachyphyllum obesum* grew beneath the canopy. Infrequent examples of other taxa, including species assigned to the Pinaceae, Araucariceae, and Taxodiaceae (now considered part of the Cupressaceae), have also been reported in the Wealden [2,4,5], although the assignment of these early Cretaceous specimens to modern families has been challenged [5].

Almost all modern conifers produce resinous exudates. In extant species, these resins are dominated by di- tri- and/or tetracyclic diterpenes. Mono and sesquiterpenoids are

also common constituents, and triterpenoids are present in some cases [6], but these are less important overall than diterpenoids in most conifer resins. Resins are also highly durable materials that are resistant to many of the biogeochemical processes that degrade other plant tissues and are, therefore, of considerable chemotaxonomic value as geochemical markers of fossil taxa. Nicholas et al. [7] have reported small amounts of well preserved fossil resin (amber) in association with the fossil flora within lignitic marls of the Grange Chine, Wessex Formation: Wealden Group (Barremian: Early Cretaceous) on the south west coast of the Isle of Wight. The lignitic marls are associated with fossiliferous green-gray mudstones that are characterized by abundant plant debris [8]. The locality is described in detail by Nicholas et al. [7]. Nicholas et al. [7], and later Seldon [9], have reported infrared spectra of amber from the Isle of Wight and on the basis of the results obtained have suggested familial affiliation with the extant families *Cupressaceae*, *Araucariaceae*, or *Taxodiaceae*. However, spectroscopic analyses of complex mixtures such as resins provide only a broad "fingerprint" and are, therefore, significantly less reliable than detailed molecular level characterization for chemotaxonomic purposes. The objective of this work was to attempt to determine possible paleobotanical sources of these ambers by using Pyrolysis-gas chromatography-mass spectrometry (Py-GC-MS) analyses.

### Experimental

Samples of amber from the Isle of Wight were obtained by request from the Dinosaur Isle Museum, Isle of Wight. Py-GC-MS analyses of the amber were performed as previously described [10]. Pyrolytic techniques for resin analysis require minimal sample (typically <500 µg/analysis), provide detailed molecular level data for individual products and, by variation of pyrolysis conditions, can provide information concerning both occluded low molecular weight components and macromolecular constituents of the sample [11]. For the studies described herein, samples were fractured, and small pieces (~200–400 µg) were pyrolyzed with tetramethylammonium hydroxide (TMAH) and the resulting products analyzed by gas chromatography mass spectrometry. Samples were pyrolyzed at temperatures of  $T_{py} = 300$  or  $480^{\circ}\text{C}$  to differentiate occluded volatile terpenes and macromolecular materials. Multiple analyses of individual blebs were performed and multiple discrete amber blebs were characterized to ensure that data generated are representative and to exclude the possibility of multiple discrete resins sources. Individual analytes are identified based on comparison of MS data with literature [12] and library data and in some cases, by comparison of MS results and chromatographic behavior with those of known standards.

### Results

The results of Py-GC-MS analysis ( $T_{py} = 480^{\circ}\text{C}$ ) of Isle of Wight amber are illustrated in Figure 1. Supporting data are also given in Additional File 1. Except as noted below in discussion of experiments carried out at different pyrolysis temperatures, all of the data generated in these analyses are identical to the results illustrated in Figure 1, indicating that all of the individual amber fragments analyzed are derived from a common botanical source. The structures of the products identified are illustrated in Figure 2.

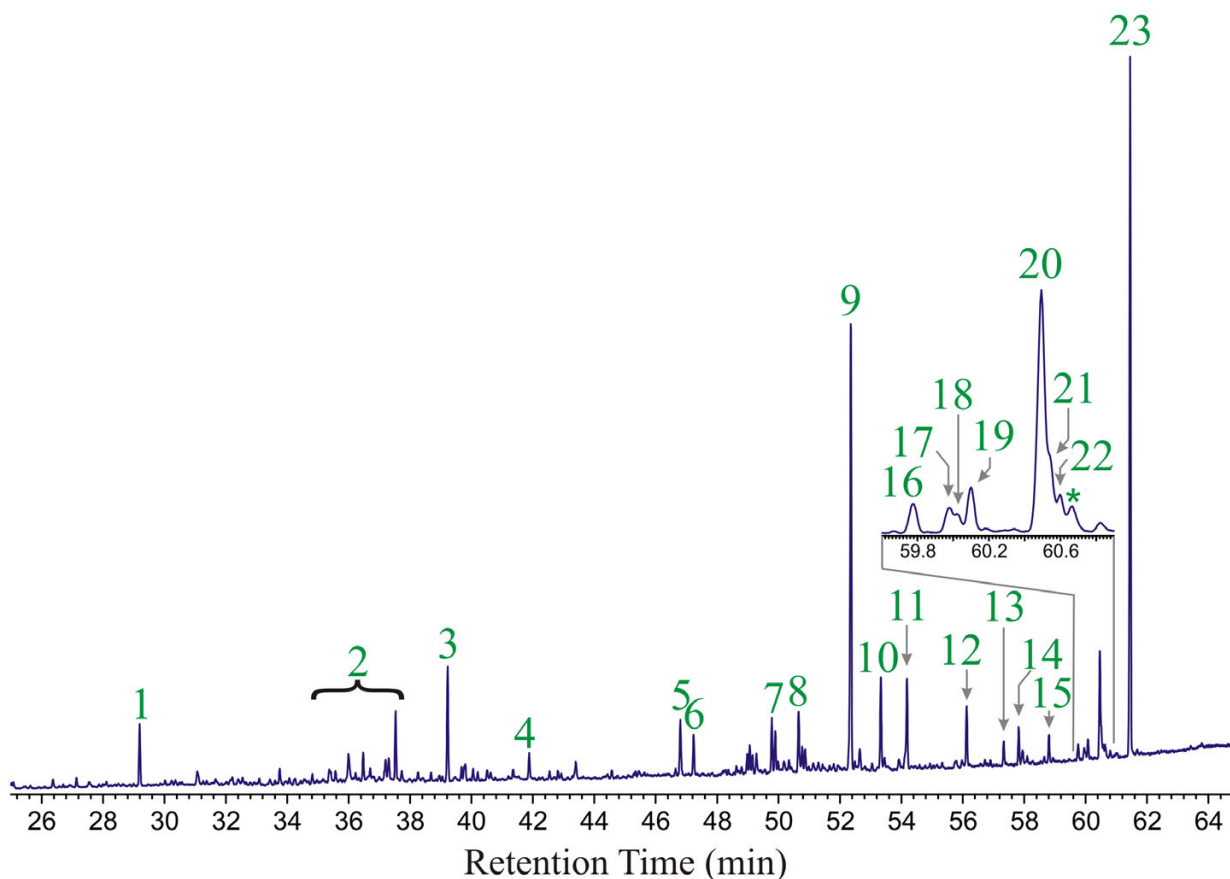
The products observed in all analyses are dominated by abietane-type diterpenoids, especially dehydroabietic acid (23), 18-nor dehydroabietane (9) and lesser amounts of analogous and isomeric products. Small amounts of bicyclic products (5 and 6) and related decarboxylation products (2), characteristic of regular polylabdanoids [13-15], are also observed. Trace amounts of a single pimarane-type diterpenoid (15) are also observed. Diterpenoids of other structural families are apparently absent.

The distribution of intact diterpenoids observed in experiments carried out at  $T_{py} = 300^{\circ}\text{C}$  is indistinguishable from that observed in Figure 1. Under these conditions, macromolecular materials are not broken down into lower molecular weight volatile fragments and hence, are not represented in the observed analytes (i.e. compounds 2, 5, and 6 are absent in these data). The identity of the distributions of abietane-type terpenoids in the  $480^{\circ}\text{C}$  and  $300^{\circ}\text{C}$  data indicates that these compounds are present as occluded materials that are not bound into a macromolecular network.

### Discussion

Previous reports of analyses of Cretaceous ambers contain familiar, multi-class terpene distributions [10,16,17] and there is no reasonable geochemical route for conversion of other diterpenoids into the abietane-type structures observed in this distribution. There is also no geochemical evidence suggesting significant thermal alteration or excessive oxidation of these samples, and the depositional setting from which they were recovered suggests a very mild geologic history. Therefore, these data represent a unique chemotaxonomic signature of the original source resin.

Labdanoid- and abietane-type diterpenoids are common constituents of the resins of many extant conifer families but typically occur in conjunction with a variety of other types of diterpenoids. In modern resins, the exclusive presence of labdanoid- and abietane-type diterpenoids is an indicator of the *Pinaceae* [6,18-20]. *Pinaceae* resins are usually predominated by abietanoic acids and lack phenolic diterpenes such as ferruginol or sugiol [6]. These



**Figure 1**

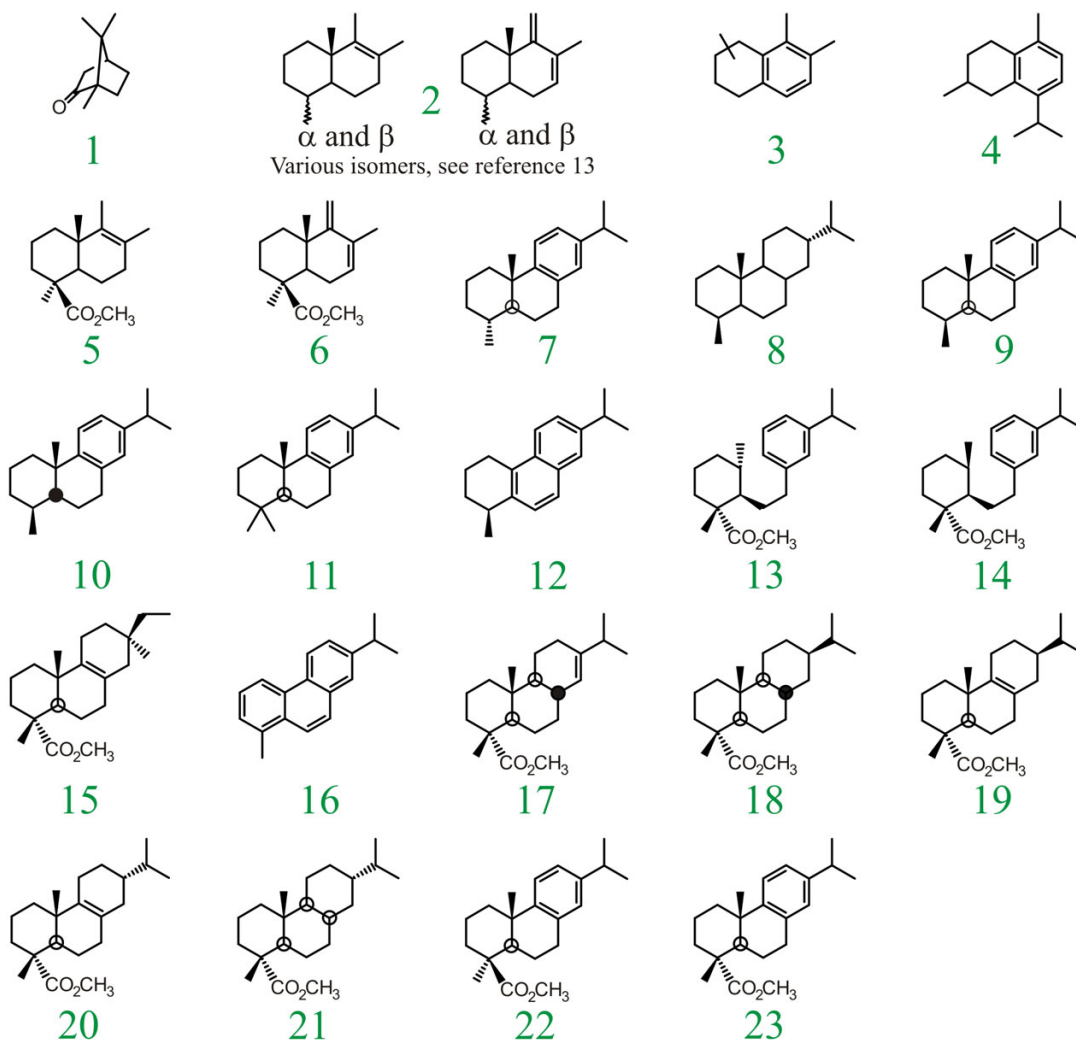
Distribution of products observed by Py-GC-MS ( $T_{py} = 480^{\circ}\text{C}$ ) analysis of lower Cretaceous (Barremian) amber from the Isle of Wight. Structures of the observed analytes are illustrated below the chromatogram. Number of chromatographic peaks corresponds to numbering below individual structures. Enlargement of the region from 59.6–60.9 minutes is inset for clarity. \* = Unassignable coeluting mixture.

observations are consistent with the results presented here, wherein the Isle of Wight analyses are dominated by dehydroabietic acid and phenolic abietanes are absent. *Pinaceae* resins are also marked by an absence of tetracyclic terpenoids, e.g. kaurane or phyllocladane [6], also consistent with the data presented here.

By analogy with extant resins the observed distribution of diterpenes in these samples suggests a paleobotanical affinity with the *Pinaceae*. This assignment is supported by the minor presence of an early pinaceous species (*Pityites solmsii* (Seward) Seward) within the Wealdon deposits [4].

However, macrofossil evidence indicates that species belonging to the *Cheirolepidiaceae* were by far the dominant conifers contributing to these deposits. Phylogenetic relationships between the *Cheirolepidiaceae* and extant conifer families are uncertain [21]. To date, only one instance of possibly cheirolepidiaceous amber has been reported [22]

and no rigorous geochemical analysis of amber unambiguously associated with the *Cheirolepidiaceae* has been described [16]. Data describing the extract of fossil leaves of *Frenelopsis alata* has been reported [23], showing that the extract contained many terpenoids associated with conifer resins, including some abietane type diterpenes. However, the relationship between the terpene composition of leaf extracts and resins is tenuous. Furthermore, the leaf extracts reported are from the cheirolepidiaceous genus *Frenelopsis*. The genera of *Cheirolepidiaceae* present in the Isle of Wight deposits are reported to be *Pseudofrenelopsis* and *Brachyphyllum*. Despite the similarity of the names assigned to these genera (*Frenelopsis* and *Pseudofrenelopsis*), these are distinct taxa and therefore, these data do not preclude the possibility that the resin chemistry of the *Cheirolepidiaceae* genera present in the Isle of Wight deposits may have been similar to the resin chemistry of the extant *Pinaceae*. Hence, the lack of geochemical data, as well as the dominance of the *Cheirolepidiaceae* within



**Figure 2**  
Structure Key. Numbering of individual structures corresponds with numbering of chromatographic peaks illustrated in Figure 1.

these deposits, precludes *a priori* exclusion of this family as a potential source of these samples. Therefore, in the absence of additional data, the *Cheirolepidiaceae* must be included as a possible source for the samples characterized in the present study.

**Conclusion**

Py-GC-MS analyses of early Cretaceous resin from the Isle of Wight, southern England, indicate that these resins are dominated nearly exclusively by abietane-type and labdaneoid-type diterpenes. While this distribution provides a compelling argument for the assignment of these samples to the *Pinaceae*, the lack of geochemical data for the dominant conifers in the deposits, the *Cheirolepidiaceae*, precludes the exclusion of this family as a possible source of

these samples. It is also not unreasonable to suggest that the *Pinaceae* may be under represented in the fossil record or that *Pityites solmsii* (Seward) Seward, the only well represented pinaceous species from the Isle of Wight, may have been a copious resin producer in the environment. Therefore, until clear data concerning the resin chemistry of the *Cheirolepidiaceae* is presented, the distribution presented here is equivocally assignable to either family. This work has demonstrated the use of resin chemistry in the Early Cretaceous, and these resins are the oldest resins to date to yield useful chemosystematic data.

## Additional material

### Additional file 1

GC-MS data for Isle of Wight amber. Interactive HTML version of data for Figures 1 and 2, including machine readable structure and MS data are given in Additional File 1.zip. These data are included to allow readers to access data underlying the structural assignments given. To access these data, download this file and unzip the compressed archive, ensuring that the embedded directory structure is preserved. Once uncompressed, simply open Index.html. Javascript must be enabled in your web browser in order to fully access these files. These files will also be available on line via the Geochemical Transactions web site in the near future.

Click here for file

[<http://www.biomedcentral.com/content/supplementary/1467-4866-9-3-S1.zip>]

## Acknowledgements

We thank Dr. Martin Munt, Curator of Geology, Isle of Wight Council, Dinosaur Isle Museum, Isle of Wight, England for providing the samples used and for helpful comments during preparation of this manuscript, and the reviewers of this manuscript for further helpful comments.

## References

- Insole AN, Hutt S: **The palaeoecology of the dinosaurs of the Wessex Formation (Wealden Group, Early Cretaceous), Isle of Wight, Southern England.** *Zool J Linn Soc* 1994, **112**:197-215.
- Oldham TCB: **Flora of the Wealden Plant Debris Beds of England.** *Paleontology* 1976, **19**:437-502.
- Alvin KL, Fraser CJ, Spicer RA: **Anatomy and palaeoecology of *Pseudofrenelopsis* and associated conifers in the English Wealden.** *Paleontology* 1981, **24**:759-778.
- Watson J, Alvin KL: **An English Wealden floral list, with comments on possible environmental indicators.** *Cretaceous Res* 1996, **17**:5-26.
- Hughes NF: **Plant succession in the English Wealden strata.** *Proc Geol Assoc* 1975, **86**:439-455.
- Otto A, Wilde V: **Sesqui-, di-, and triterpenoids as chemosystematic markers in extant conifers – a review.** *Bot Rev* 2001, **67**:141-238.
- Nicholas CJ, Henwood AA, Simpson M: **A new discovery of early Cretaceous (Wealden) amber from the Isle of Wight.** *Geol Mag* 1993, **130**:847-850.
- Wright VP, Taylor KG, Beck VH: **The paleohydrology of Lower Cretaceous seasonal wetlands, Isle of Wight.** *J Sediment Res* 2000, **70**:619-632.
- Seldon PA: **First British Mesozoic spider, from Cretaceous amber of Isle of Wight, Southern England.** *Palaeontology* 2002, **45**:973-983.
- Anderson KB: **The nature and fate of natural resins in the geosphere. XII. Investigation of C-ring aromatic diterpenoids in Raritan amber by pyrolysis-GC-matrix isolated FTIR-MS.** *Geochem Trans* 2006, **7**:2.
- Anderson KB, Winans RE: **The nature and fate of natural resins in the geosphere. I. Evaluation of pyrolysis-gas chromatography/mass spectrometry for the analysis of natural resins and resinates.** *Anal Chem* 1991, **63**:2901-2908.
- Zinkel DF, Zank LC, Weslowski MF: **Diterpene resin acids. A compilation of infrared, mas nuclear magnetic resonance ultraviolet spectra and gas chromatographic retention data (of methyl esters)** U.S. Department of Agriculture; 1971:191.
- Anderson KB: **New evidence concerning the structure, composition, and maturation of Class I (Polylabdanoid) resinates.** In *ACS Symposium Series Volume 617*. Edited by: Anderson KB, Crelling JC. Washington: ACS; 1995:105-129.
- Anderson Ken B, Winans RE, Botto RE: **The nature and fate of natural resins in the geosphere-II. Identification, classification, and nomenclature of resinates.** *Org Geochem* 1992, **18**(6):829-41.
- Anderson KB: **The Nature and Fate of Natural Resins in the Geosphere. IV. Middle and Upper Cretaceous Amber from the Taimyr Peninsula, Siberia – Evidence for a New Form of Polylabdanoid Resinate and Revision of the Classification of Class I Resinates.** *Org Geochem* 1994, **21**(2):209-212.
- Alonso J, Arillo A, Barron E, Corral JC, Grimalt J, Lopez JF, Lopez R, Martinez-Delclos X, Ortuno V, Penalver E, Trincao PR: **A new fossil resin with biological inclusions in lower Cretaceous deposits from Alava (Northern Spain, Basque-Cantabrian Basin).** *J Paleontol* 2000, **74**:158-178.
- Chaler R, Grimalt JO: **Fingerprinting of Cretaceous higher plant resins by infrared spectroscopy and gas chromatography coupled to mass spectrometry.** *Phytochem Anal* 2005, **16**(6):446-450.
- Hauteville Y, Michels R, Malartre F, Troullier A: **Vascular plant biomarkers as proxies for palaeoclimatic changes at the Dogger/Malm transition of the Paris Basin (France).** *Org Geochem* 2006, **37**:610-625.
- Otto A, Simoneit BRT: **Biomarkers of Holocene buried conifer logs from Bella Coola and north Vancouver, British Columbia, Canada.** *Org Geochem* 2002, **32**:1241-1251.
- Otto A, Simoneit BRT, Wilde V, Kunzmann L, Puttmann W: **Terpenoid composition of three fossil resins from Cretaceous and Tertiary conifers.** *Rev Palaeobot Palyn* 2002, **120**:203-215.
- Watson J: **The Cheirolepidiaceae. Origin and Evolution of Gymnosperms** 1988:382-447.
- Schmidt AR, Ragazzi E, Coppellotti O, Roghi G: **A microworld in Triassic amber.** *Nature* 2006, **444**:835.
- Nguyen Tu TT, Derenne S, Largeau C, Mariotti A, Bocherens H, Pons D: **Effects of fungal infection on lipid extract composition of higher plant remains: comparison of shoots of a Cenomanian conifer, uninfected and infected by extint fungi.** *Organic Geochemistry* 2000, **31**:1743-1754.

Publish with **BioMed Central** and every scientist can read your work free of charge

"BioMed Central will be the most significant development for disseminating the results of biomedical research in our lifetime."

Sir Paul Nurse, Cancer Research UK

Your research papers will be:

- available free of charge to the entire biomedical community
- peer reviewed and published immediately upon acceptance
- cited in PubMed and archived on PubMed Central
- yours — you keep the copyright

Submit your manuscript here:  
[http://www.biomedcentral.com/info/publishing\\_adv.asp](http://www.biomedcentral.com/info/publishing_adv.asp)

